

Welcome to Reception

Enjoy, Achieve, Succeed



Head Teacher:
Mrs Helen Bruce

Early Years Lead:
Miss Connie Stamp



Please note, due to COVID 19 these arrangements are subject to change. We will inform parents of any changes via Seesaw and the school website.



Enjoy, Achieve, Succeed

Appletree Gardens First School motto is at the heart of our Early Years ethos...

Our dedicated team work enthusiastically to ensure all children **ENJOY** each and every day.

We are passionate about providing a rich and varied environment and curriculum to enable all children to **ACHIEVE** the very best that they can.

We are committed to developing confident, successful learners who **SUCCEED** in everything they do.



Reception Team



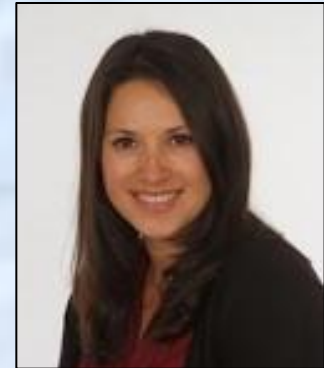
**Mrs Emma
Mitchell**

Class 1 Teachers:



**Mrs Philippa
McAvelia**

**Class 2 Teacher:
Miss Connie Stamp**



Reception Teaching Assistants:

**Miss Sophie
Jennings**



**Miss Beth
Brown**

Reception Organisation



“From little pips, mighty apples grow”

- The Reception area consists of two separate classrooms, a shared learning area and a richly resourced and inviting outdoor area and Nature Zone.
- Children have the opportunity to play and learn outdoors every day in their secure garden area.
- Children in Reception work in many different ways - child initiated learning ‘busy time’, whole class carpet time, small group work and 1-1 sessions
- Across the year we aim to offer a range of real life experiences, trips and opportunities for parents to become involved - one of our first parent projects is the Personality Patchwork

Reception Transition Visits



“From little pips, mighty apples grow”

- All new Reception children have the opportunity to meet their new teachers on 29th and 30th June
- New admits will have already received their invitations to these days.
- Current AGFS Nursery pupils will also visit on these days during their normal school hours.
- September Stay and Play days - invites in welcome packs



Starting school

“Every student matters, every moment counts”

We know that starting school is a really big step. We support every child in our care to thrive in our school and our community and develop a lifelong love of learning.

With this in mind we phase entry into Reception. This enables your child to be part of a smaller group when they are meeting new teachers, talking to new friends and becoming familiar with their classroom, the school and routines. It also gives Reception staff the opportunity to work with your child, to talk to them as they choose activities and to build relationships.

As a result, our children at Appletree settle into Reception quickly and happily, ready for the adventures ahead!



Week 1 - Stay and Play

Thursday 2nd September / Friday 3rd September

Wednesday 1st September - Staff Training Day

Thursday 2nd September - Stay and Play sessions

OR

Friday 3rd September - Stay and Play sessions

To ensure a smooth transition with happy and confident children you are invited to bring your child for a Stay and Play session on the date and time stated in your pack. This time will allow you to familiarise children with the reception environment, bring your paperwork and child's birth certificate and have conversations with staff.

IMPORTANT - Remember to bring your completed forms to the Stay and Play session.



Week 2 - Part Time

Monday 6th – Friday 10th September 2021

All Reception children will start school on Monday 6th September for **either** a morning or afternoon session.

Morning session: 8:50 - 11:30

If your child currently attends morning nursery they will attend the morning session in Reception.

Afternoon session 12:30 - 3:10

If your child currently attends afternoon nursery they will attend the afternoon session in Reception.

If your child does not attend AGFS nursery or previously accessed 30 hours you will have confirmation in your welcome pack of which session to attend.

Friday 10th September

All Reception children attend 8:50am - 2pm

Children will have lunch in school on this day



Wrap Around Care

**School will be operating their extended provision
for Reception as follows:**

Week 1: Thursday 2nd and Friday 3rd September.

- Children can access Holiday Club Provision

Week 2: Monday 6th – Thursday 9th September

- Children attending the **morning session** can access afternoon Wraparound from 11:30 - 3:10pm (session charge £13)
- Children attending **afternoon sessions** can access morning Wraparound from 9:00 - 12:30 (session charge £13)

Week 2 Friday 10th September - Stay for Lunch

- On Friday, as their day finishes at 2pm, children can access childcare from 2-3.10pm (session charge £4)

Please contact Susanne Cross at susanne.cross@appletreegfs.org.uk for more details and bookings.



Full Days in Reception

Monday 13th September

All children will stay for full days from
Monday 13th September

Full School Day: 8:50am – 3:10pm

Follow the one way system from the
school car park onto the main yard.
Continue round to the Reception Garden

* Some children may require a longer transition period which will be
discussed with you if necessary.

Appletree Extended Childcare Provision

- Breakfast Club
- Wraparound Care
- After School Club
- Holiday Club
- 2 Year Old Provision



Susanne Cross – OOSC Manager
Details and prices in Welcome Packs





What learning looks like in Reception

We have worked hard to develop a curriculum that is progressive, inclusive and engaging for all learners. We follow half-termly topics to ignite children's curiosity and enthusiasm for learning. Within our topics we provide a range of well planned, exciting, stimulating and challenging activities, for high quality play, both inside and outside.



Prime areas

- Personal, Social and Emotional Development
- Physical Development
- Communication and Language

Specific areas

- Literacy
- Mathematics
- Understanding the World
- Expressive Arts and Design



What learning looks like in Reception

- PLAY is essential for children's development across all areas. Play builds on children's confidence as they learn to explore, to relate to others around them and develop relationships, set their own goals and solve problems. Children learn by leading their own play and by taking part in play which is guided by adults.
- Adult directed tasks – whole class and small groups
- Interventions where appropriate
- Range of real life experiences and trips
- Parents projects, home learning challenges and Seesaw



Outdoor Learning

We have fantastic daily opportunities for the children to play and explore on a large scale outdoors in our Nature Zone and in our secure Reception Garden.

It is imperative that children come prepared for the ever changing weather.



Warm
waterproof
coats

Wellies - to be
kept in school

Hats and sun cream in warm
weather



Sensible footwear
- no sandals



Health and Self Care



- We encourage and support the children to develop independence and self-help skills. These are all super little challenges to practise over the summer holidays!

Going to the toilet and managing personal hygiene independently

Pulling sleeves through jumpers and cardigans which are inside out



Using a knife and fork



Putting on and fastening coats



Effective hand washing

Food and Drink



Named water bottle to be brought in each day - no juice or flavoured water



A variety of fruit is provided daily

Discussions around staying fit and healthy and a focus on oral health



Cool Milk
www.coolmilk.com

Lunchtimes in School



- Reception eat lunch in the school Canteen and are supported by Lunchtime Supervisors and Reception Staff.
- We begin our lunchtimes a little earlier than the rest of the school so that we are settled first and the canteen is quieter.
- Children may choose between a hot school dinner or to bring a healthy packed lunch from home.
- Please register for School Meals



North Tyneside Council

Medical Information



- Staff can only administer medicines which have been prescribed for your child.
- If you do have prescribed medication, you must complete a 'Medication Form'. This indicates the dosage and the frequency the medicine needs to be administered. These are available from the school office.
- Please advise us of any medical information and allergies relating to your child on the school admission form.





School Uniform



School Uniform and P.E. kit – see welcome pack for details and the Emblematic website for prices.

Children should bring a warm, waterproof coat every day.

Children should keep a pair of wellies in school.

On PE day children should come to school in their PE kit. PE days to be confirmed.

Please ensure **ALL** items of clothing are clearly named to help children develop independence in managing their belongings.



Seesaw



Please sign up to Seesaw Family.

It is an excellent tool for communication and it allows us to share key moments in your child's learning journey.

You will find your code in your Welcome packs.

More than one family member can sign up.

Personality Patchwork

Parent and Child Project



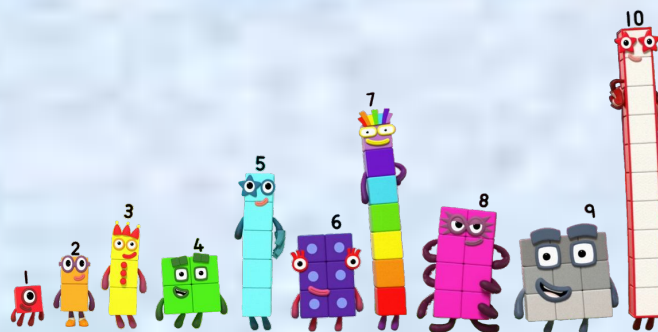
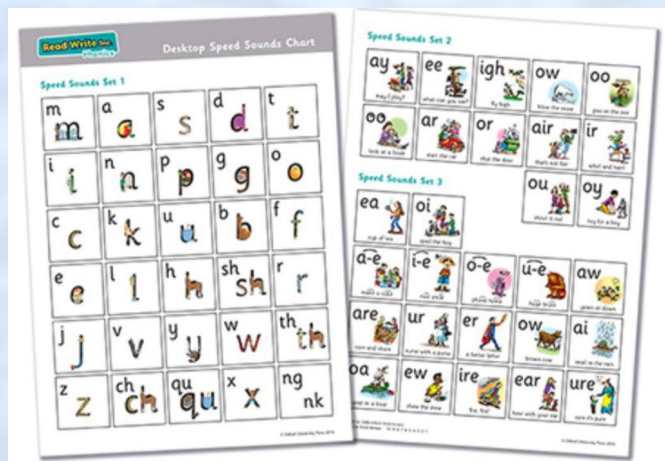
Normally in October

'Getting it Right from the Start'

Supporting your child with reading, writing and maths

Normally at the beginning of October

This meeting provides key information and practical ideas to help develop your child's reading, writing and maths skills at home.





Thank you for joining us today.

We look forward to working in partnership with you and your child to ensure they settle into their new class and achieve their full potential.

